

# DATA SHEET

## **BLU30/12** UHF power transistor

Product specification

January 1985

# UHF power transistor

# BLU30/12

### DESCRIPTION

N-P-N silicon planar epitaxial transistor primarily intended for use in mobile radio transmitters in the 470 MHz communications band.

### FEATURES:

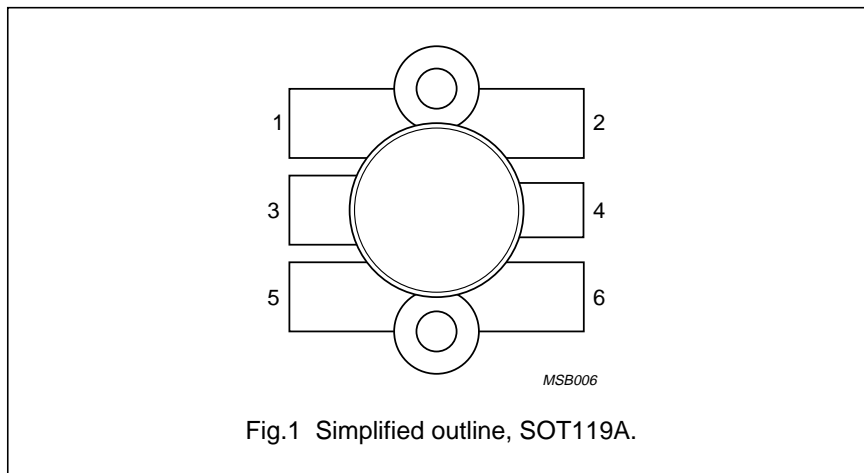
- multi-base structure and emitter-ballasting resistors for an optimum temperature profile
- gold metallization ensures excellent reliability
- internal matching to achieve an optimum wideband capability and high power gain

The transistor has a 6-lead flange envelope with a ceramic cap (SOT-119). All leads are isolated from the flange.

### QUICK REFERENCE DATA

|                                  |                 |
|----------------------------------|-----------------|
| Envelope                         | SOT-119         |
| Mode of operation                | class-B; c.w.   |
| Collector-emitter voltage (d.c.) | $V_{CE}$ 12,5 V |
| Frequency                        | f 470 MHz       |
| Load power                       | $P_L$ 30 W      |
| Power gain                       | $G_P$ > 6,0 dB  |
| Collector efficiency             | $\eta_C$ > 55 % |
| Heatsink temperature             | $T_h$ 25 °C     |

### PIN CONFIGURATION



### PINNING

| PIN | DESCRIPTION |
|-----|-------------|
| 1   | emitter     |
| 2   | emitter     |
| 3   | base        |
| 4   | collector   |
| 5   | emitter     |
| 6   | emitter     |

**PRODUCT SAFETY** This device incorporates beryllium oxide, the dust of which is toxic. The device is entirely safe provided that the BeO disc is not damaged.

# UHF power transistor

BLU30/12

## RATINGS

Limiting values in accordance with the Absolute Maximum System (IEC 134)

Collector-base voltage (open emitter)

peak value

$V_{CBOM}$  max. 36 V

Collector-emitter voltage (open base)

$V_{CEO}$  max. 16,5 V

Emitter-base voltage (open collector)

$V_{EBO}$  max. 4 V

Collector current

d.c. or average

$I_C$  max. 6 A

(peak value);  $f > 1$  MHz

$I_{CM}$  max. 18 A

Total power dissipation

$f > 1$  MHz;  $T_{mb} = 25$  °C

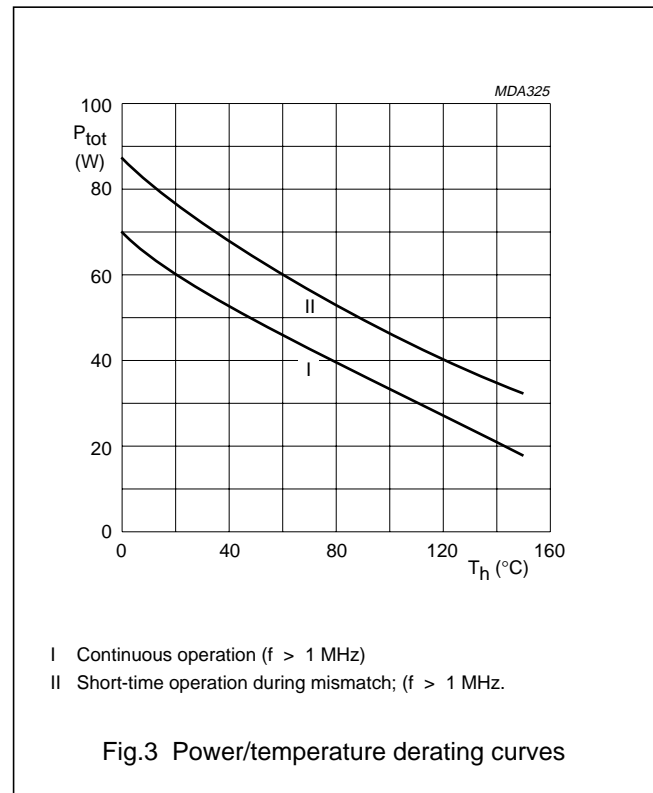
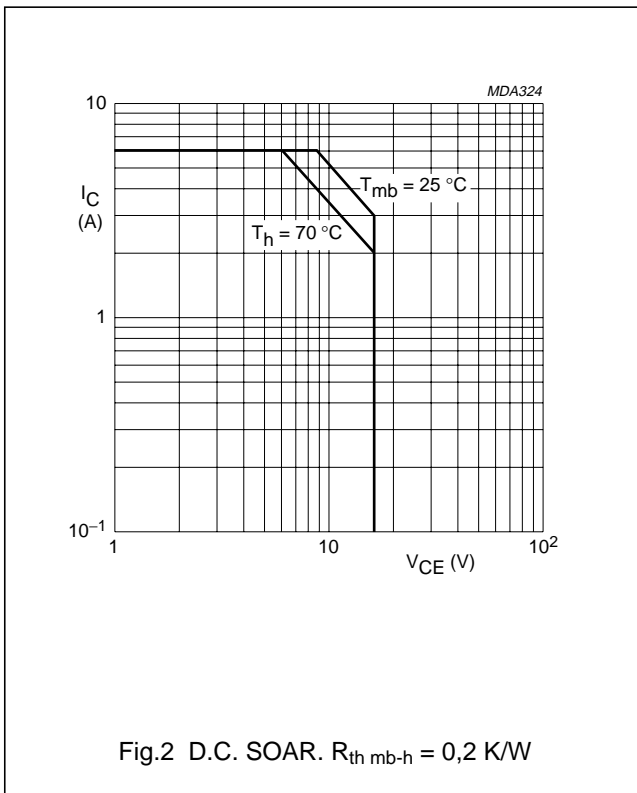
$P_{tot}$  (r.f.) max. 65 W

Storage temperature

$T_{stg}$  -65 to + 150 °C

Operating junction temperature

$T_j$  max. 200 °C



## THERMAL RESISTANCE

(dissipation = 45 W;  $T_{mb} = 25$  °C)

From junction to mounting base

(r.f. dissipation)

$R_{th\ j-mb(r.f.)}$  max. 2,45 K/W

From mounting base to heatsink

$R_{th\ mb-h}$  max. 0,2 K/W

UHF power transistor

BLU30/12

**CHARACTERISTICS**

$T_j = 25\text{ }^\circ\text{C}$  unless otherwise specified

Collector-base breakdown voltage

$I_C = 50\text{ mA}$ ; open emitter

$V_{(BR)CBO} > 36\text{ V}$

Collector-emitter breakdown voltage

$I_C = 100\text{ mA}$ ; open base

$V_{(BR)CEO} > 16,5\text{ V}$

Emitter-base breakdown voltage

$I_E = 10\text{ mA}$ ; open collector

$V_{(BR)EBO} > 4\text{ V}$

Collector cut-off current

$V_{BE} = 0$ ;  $V_{CE} = 16\text{ V}$

$I_{CES} < 22\text{ mA}$

Second breakdown energy

$L = 25\text{ mH}$ ;  $f = 50\text{ Hz}$ ;  $R_{BE} = 10\text{ }\Omega$

$E_{SBR} > 8\text{ mJ}$

D.C. current gain

$I_C = 4\text{ A}$ ;  $V_{CE} = 10\text{ V}$

$h_{FE} > 15$   
typ. 60

Collector capacitance at  $f = 1\text{ MHz}^{(1)}$

$I_E = i_e = 0$ ;  $V_{CB} = 12,5\text{ V}$

$C_c$  typ. 85 pF

Feed-back capacitance at  $f = 1\text{ MHz}^{(1)}$

$I_C = 0$ ;  $V_{CE} = 12,5\text{ V}$

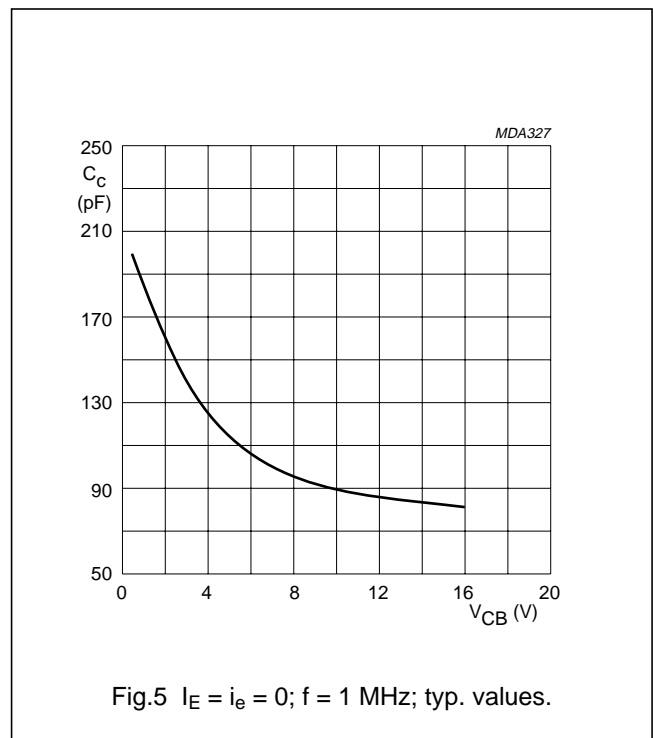
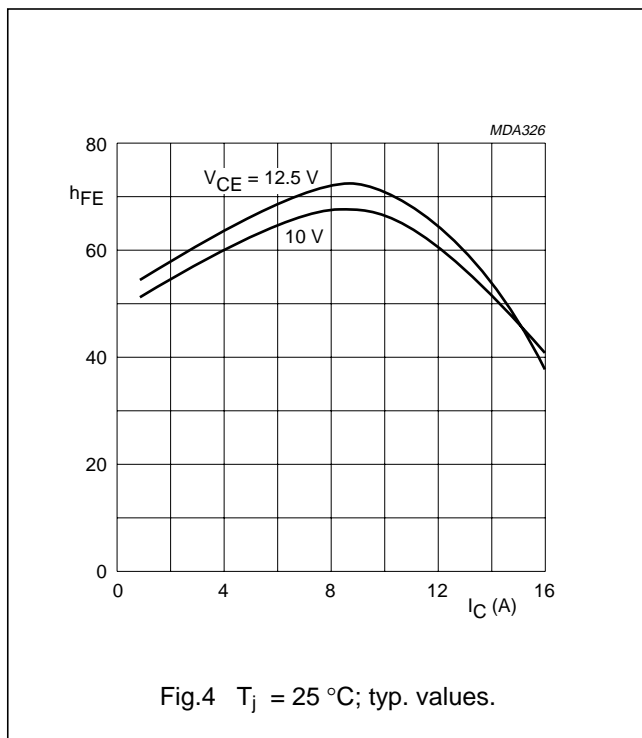
$C_{re}$  typ. 52 pF

Collector-flange capacitance

$C_{cf}$  typ. 3 pF

**Note**

1. Device mounted in SOT-119 envelope without inputmatching.

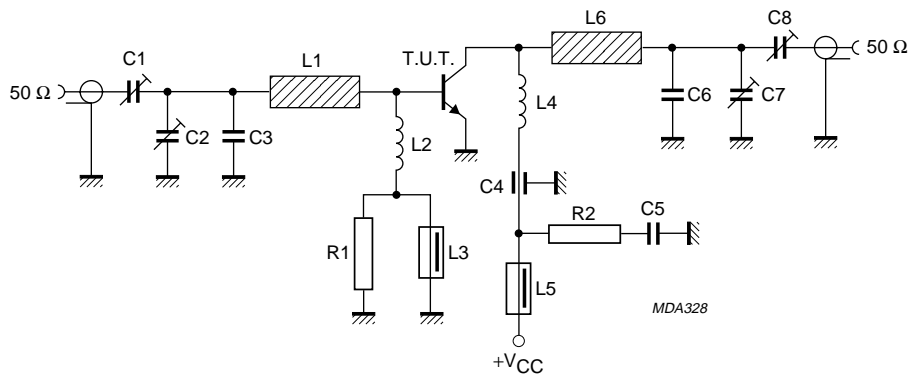


## UHF power transistor

BLU30/12

## APPLICATION INFORMATION

|                                  |  |             |
|----------------------------------|--|-------------|
| Mode of operation                | In narrow-band test circuit; class-B; c.w. |             |
| Collector-emitter voltage (d.c.) | $V_{CE}$                                   | 12,5 V      |
| Frequency                        | f  | 470 MHz     |
| Load power                       | $P_L$                                      | 30 W        |
| Power gain                       | $G_p$                                      | > 6,0 dB    |
|                                  |  | typ. 7,4 dB |
| Collector efficiency             | $\eta_c$                                   | > 55 %      |
|                                  |  | typ. 66 %   |
| Heatsink temperature             | $T_h$                                      | 25 °C       |

Fig.6 Class-B test circuit at  $f = 470$  MHz.

## List of components:

- C1 = C2 = C7 = C8 = 2 to 9 pF film dielectric trimmer (cat. no. 2222 809 09002)
  - C3 = C6 = 3,9 pF ceramic capacitor (500 V)
  - C4 = 100 pF feed-through capacitor
  - C5 = 100 nF polyester film capacitor
  - L1 = stripline (24,0 mm  $\times$  6,7 mm)
  - L2 = 10 turns closely wound enamelled Cu-wire (0,4 mm); int. diam. 4 mm
  - L3 = 2 turns enamelled Cu-wire (0,6 mm); Ferroxcube tube core, grade 3B5 (cat. no. 4313 020 15170)
  - L4 = 12,6 nH; 2,5 turns enamelled Cu-wire (0,7 mm); int. diam. 4 mm; length 3 mm; leads 2  $\times$  5 mm
  - L5 = Ferroxcube wideband h.f. choke, grade 3B (cat. no. 4312 020 36642)
  - L6 = stripline (28,4 mm  $\times$  6,7 mm)
  - R1 = R2 = 10  $\Omega$  carbon resistor
- L1 and L6 are striplines on a double Cu-clad printed circuit board with P.T.F.E. fibre-glass dielectric ( $\epsilon_r = 2,74$ ); thickness  $\frac{1}{16}$  inch.
- Component lay-out and printed-circuit board for 470 MHz test circuit are shown in Figs 7 and 8.

UHF power transistor

BLU30/12

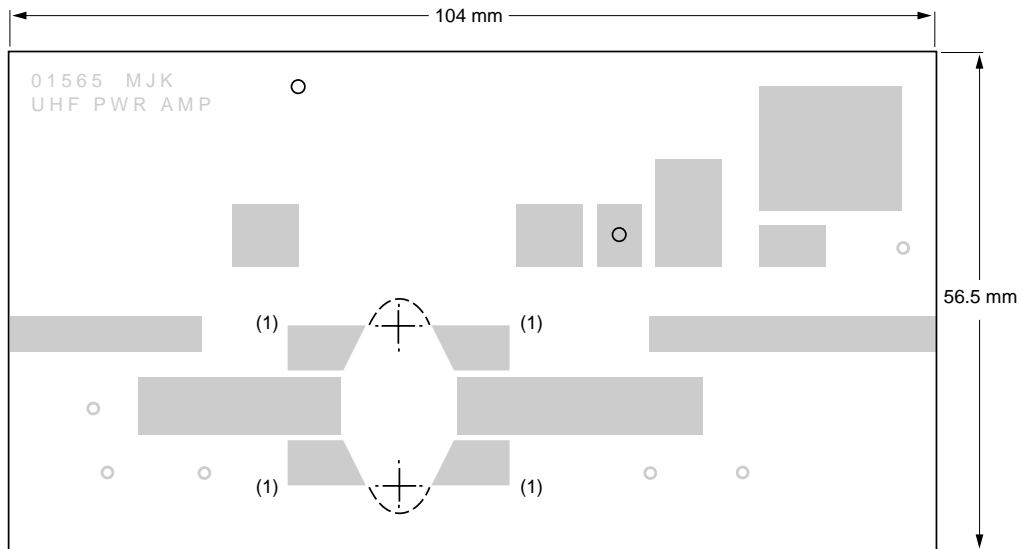
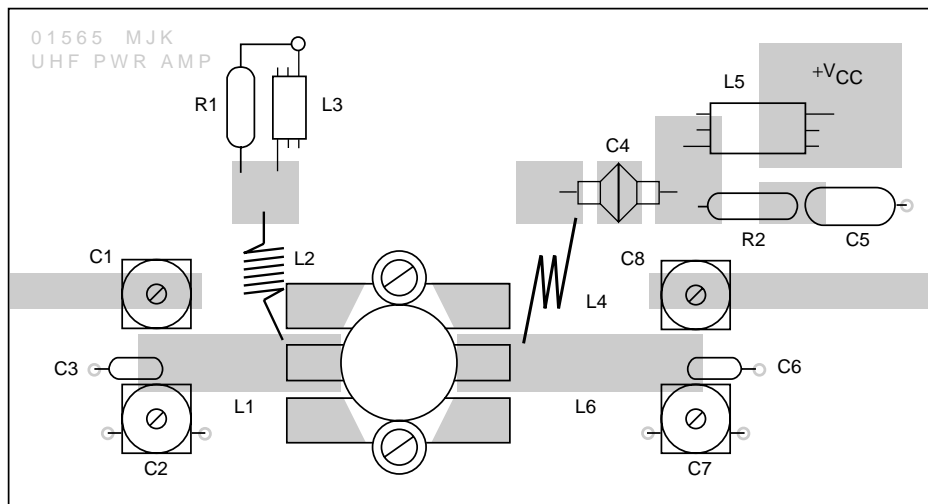
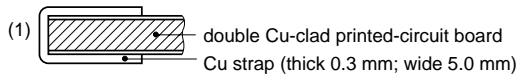


Fig.7 P.c. board for 470 MHz, class-B test circuit.



MDA329

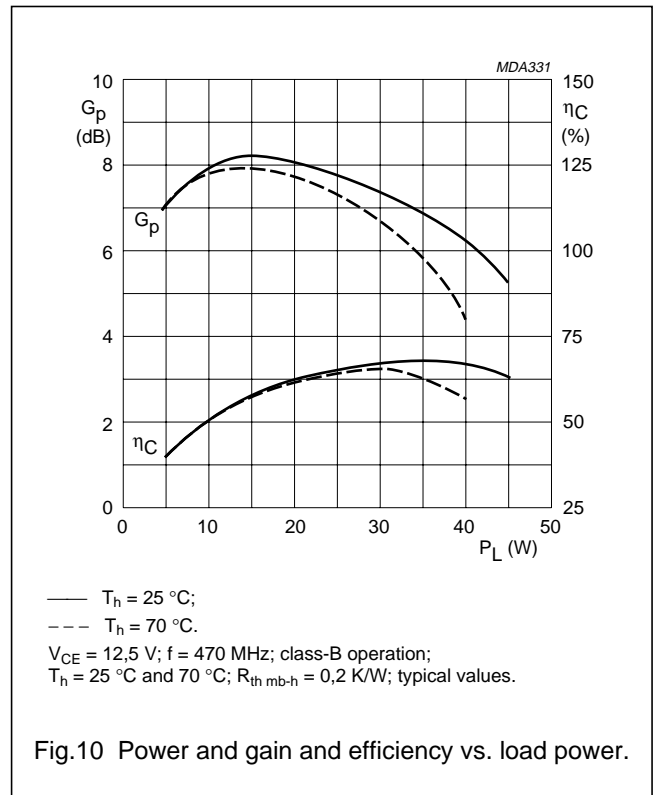
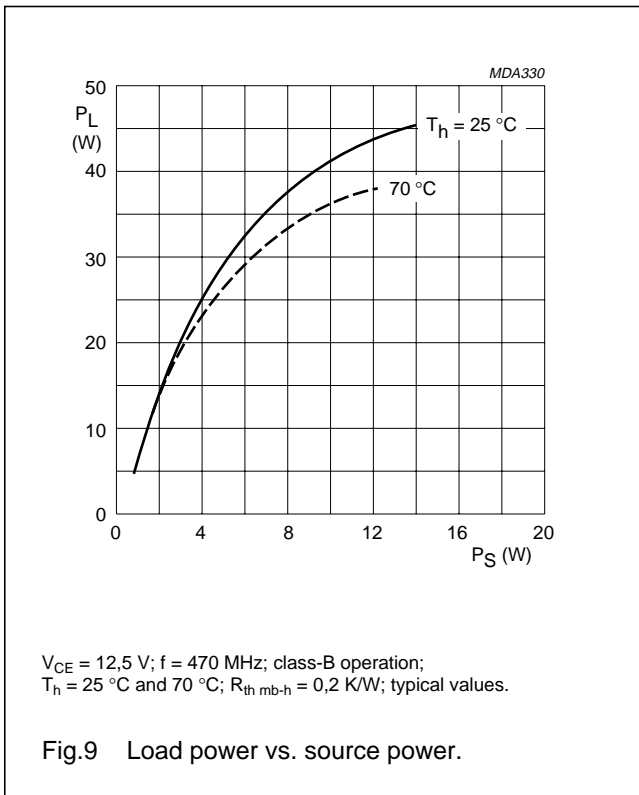


The circuit and the components are on one side of the P.T.F.E. fibre-glass board; the other side fully metallized serving as groundplane. Earth connections are made by hollow rivets and also by copper straps under the emitter to provide a direct contact between the copper on the component side and the ground plane.

Fig.8 Component lay-out of 470 MHz, class-B test circuit.

UHF power transistor

BLU30/12



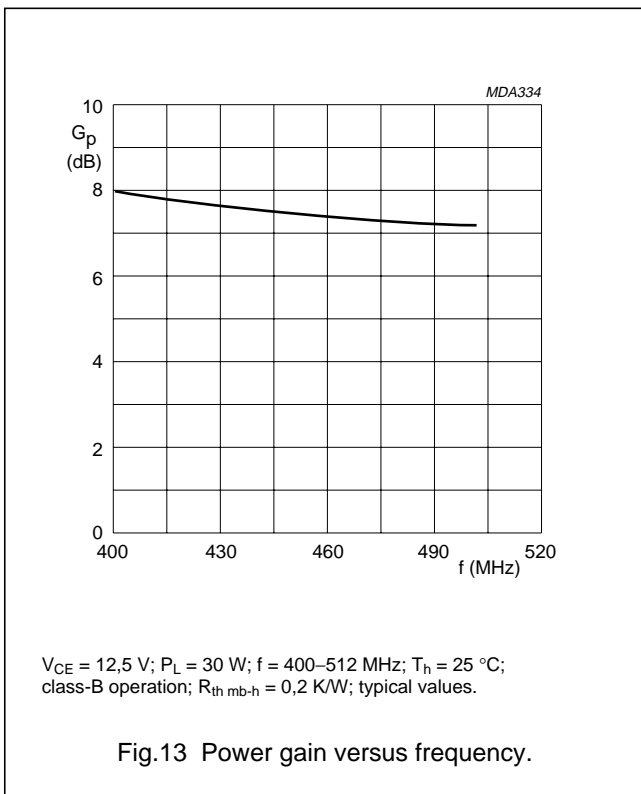
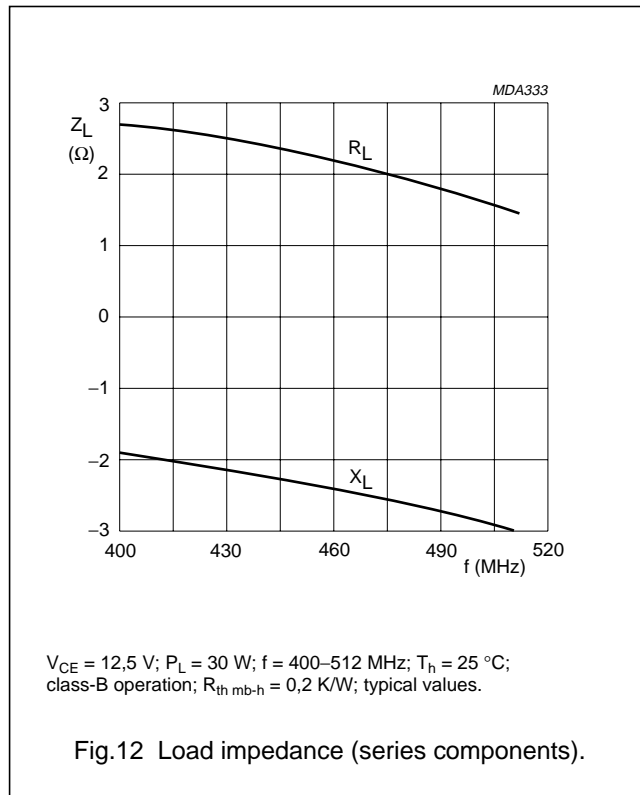
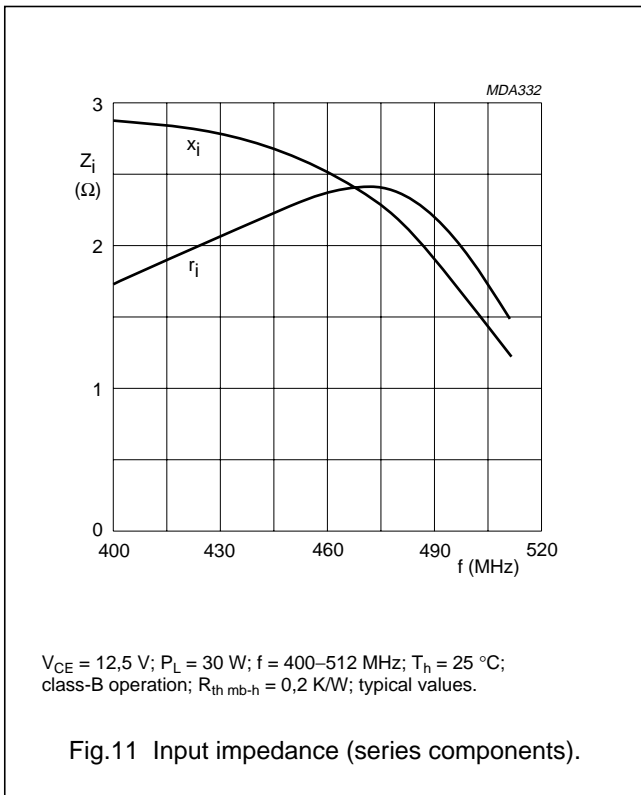
**RUGGEDNESS**

The device is capable of withstanding a full load mismatch (VSWR = 50; all phases) up to 38 W under the following conditions:

$V_{CE} = 15,5\text{ V}$ ;  $f = 470\text{ MHz}$ ;  $T_h = 25\text{ }^\circ\text{C}$ ;  $R_{th\text{ mb-h}} = 0,2\text{ K/W}$ .

UHF power transistor

BLU30/12





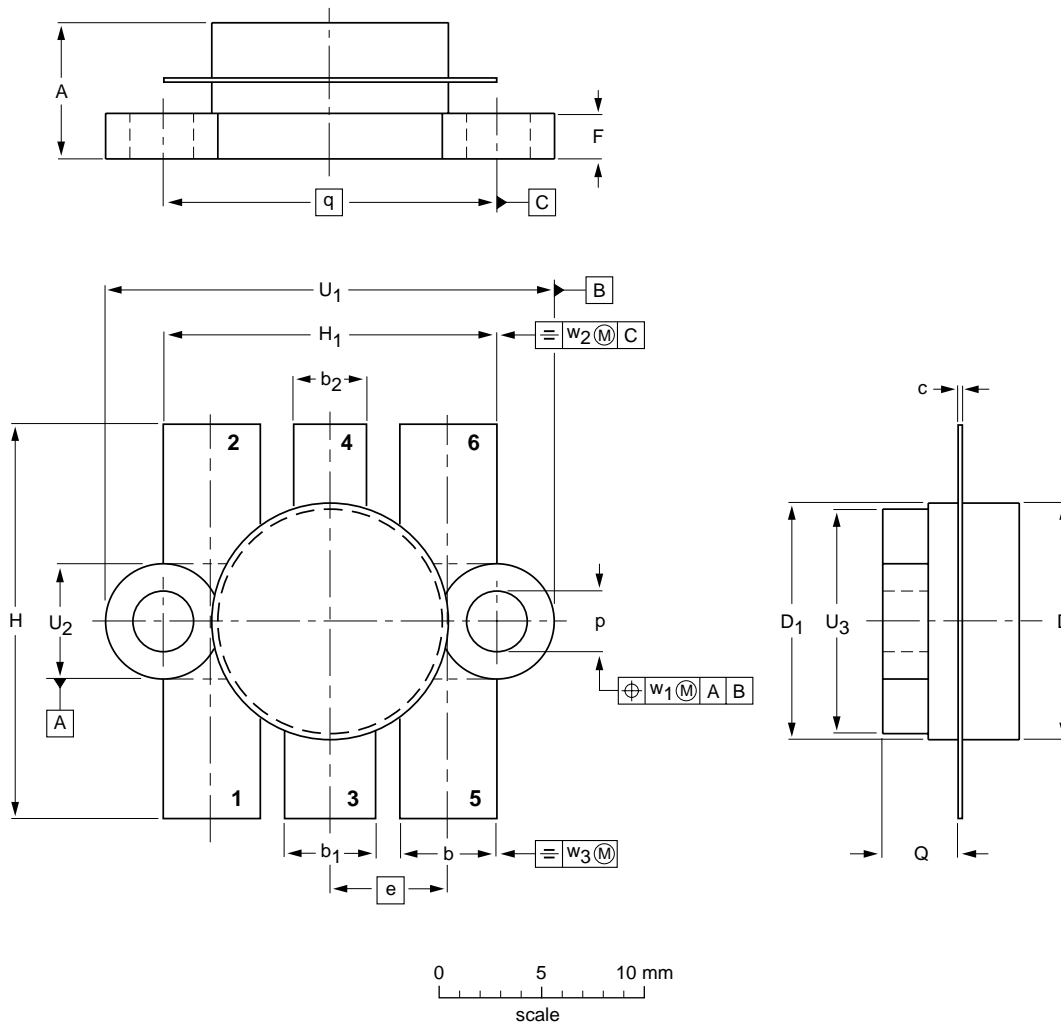
# UHF power transistor

BLU30/12

## PACKAGE OUTLINE

Flanged ceramic package; 2 mounting holes; 6 leads

SOT119A



DIMENSIONS (millimetre dimensions are derived from the original inch dimensions)

| UNIT   | A              | b              | b <sub>1</sub> | b <sub>2</sub> | c              | D              | D <sub>1</sub> | e     | F              | H              | H <sub>1</sub> | p              | Q              | q     | U <sub>1</sub> | U <sub>2</sub> | U <sub>3</sub> | w <sub>1</sub> | w <sub>2</sub> | w <sub>3</sub> |
|--------|----------------|----------------|----------------|----------------|----------------|----------------|----------------|-------|----------------|----------------|----------------|----------------|----------------|-------|----------------|----------------|----------------|----------------|----------------|----------------|
| mm     | 7.39<br>6.32   | 5.59<br>5.33   | 5.34<br>5.08   | 4.07<br>3.81   | 0.18<br>0.07   | 12.86<br>12.59 | 12.83<br>12.57 | 6.48  | 2.54<br>2.28   | 22.10<br>21.08 | 18.55<br>18.28 | 3.31<br>2.97   | 4.58<br>3.98   | 18.42 | 25.23<br>23.95 | 6.48<br>6.07   | 12.76<br>12.06 | 0.51           | 1.02           | 0.26           |
| inches | 0.291<br>0.249 | 0.220<br>0.210 | 0.210<br>0.200 | 0.160<br>0.150 | 0.007<br>0.003 | 0.505<br>0.496 | 0.505<br>0.495 | 0.255 | 0.100<br>0.090 | 0.870<br>0.830 | 0.730<br>0.720 | 0.130<br>0.117 | 0.180<br>0.157 | 0.725 | 0.993<br>0.943 | 0.255<br>0.239 | 0.502<br>0.475 | 0.02           | 0.04           | 0.01           |

| OUTLINE VERSION | REFERENCES |       |      |  | EUROPEAN PROJECTION | ISSUE DATE |
|-----------------|------------|-------|------|--|---------------------|------------|
|                 | IEC        | JEDEC | EIAJ |  |                     |            |
| SOT119A         |            |       |      |  |                     | 97-06-28   |

## UHF power transistor

BLU30/12

**DEFINITIONS**

|   |   |
|---|---|
| <b>Data Sheet Status</b>  |   |
| Objective specification   | This data sheet contains target or goal specifications for product development.       |
| Preliminary specification   | This data sheet contains preliminary data; supplementary data may be published later. |
| Product specification   | This data sheet contains final product specifications.                                |
| <b>Limiting values</b>  |   |
| Limiting values given are in accordance with the Absolute Maximum Rating System (IEC 134). Stress above one or more of the limiting values may cause permanent damage to the device. These are stress ratings only and operation of the device at these or at any other conditions above those given in the Characteristics sections of the specification is not implied. Exposure to limiting values for extended periods may affect device reliability. |   |
| <b>Application information</b>  |   |
| Where application information is given, it is advisory and does not form part of the specification.   |   |

**LIFE SUPPORT APPLICATIONS**

These products are not designed for use in life support appliances, devices, or systems where malfunction of these products can reasonably be expected to result in personal injury. Philips customers using or selling these products for use in such applications do so at their own risk and agree to fully indemnify Philips for any damages resulting from such improper use or sale.